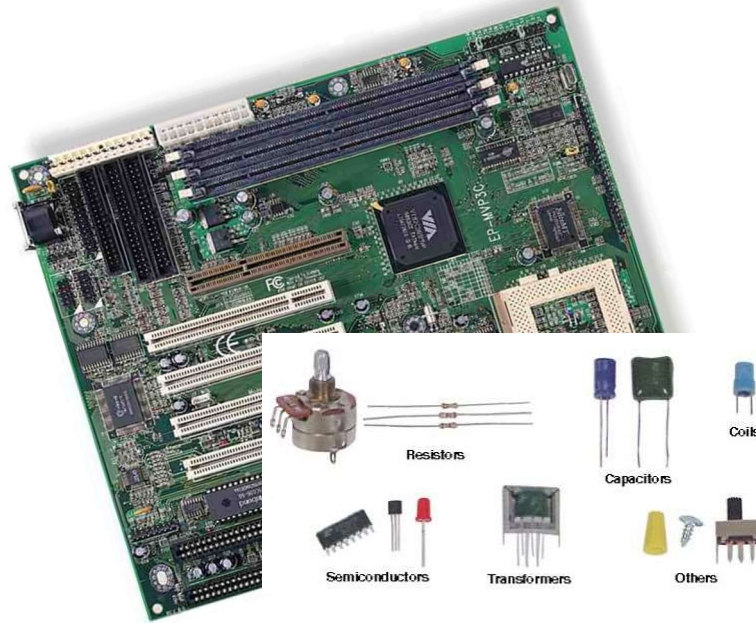
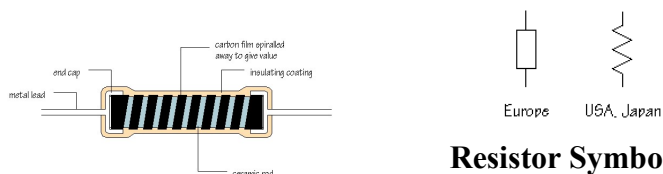


## Passive Devices



## Resistor Concept —I

- Flow of electric current through a conductor experiences a certain amount of resistance.
- The resistance, expressed in ohms ( $\Omega$ , named after George ohm), kilo-ohms ( $k\Omega$ ,  $1000\Omega$ ), or mega-ohms ( $M\Omega$ ,  $10^6\Omega$ ) is a measure of how much a resistor resists the flow of electricity.
- The magnitude of resistance is dictated by electric properties of the material and material geometry.
- This behavior of materials is often used to control/limit electric current flow in circuits.
- Henceforth, the conductors that exhibit the property of resisting current flow are called resistors.

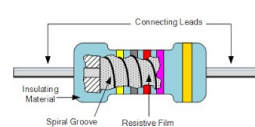
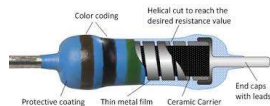


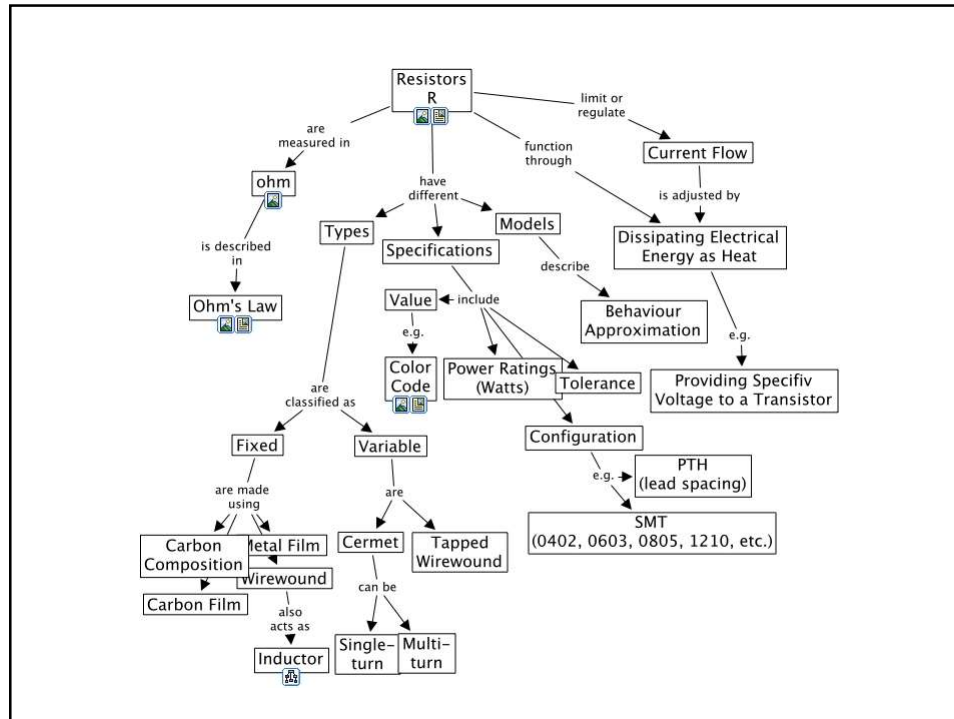
**Resistor Symbols**

## Resistor Concept —II

- A resistor is a dissipative element. It converts electrical energy into heat energy. It is analogous to the viscous friction element of mechanical system.
- When electrons enter at one end of a resistor, some of the electrons collide with atoms within the resistor. These atoms start vibrating and transfer their energy to neighboring air molecules. In this way, a resistor dissipates electrical energy into heat energy.
- Resistors can be thought of as analogous to water carrying pipes. Water is supplied to your home in large pipes, however, the pipes get smaller as the water reaches the final user. The pipe size limits the water flow to what you actually need.
- Electricity works in a similar manner, except that wires have so little resistance that they would have to be very very thin to limit the flow of electricity. Such thin wire would be hard to handle and break easily.

# RESISTOR





## Types of Resistors

- Wire Wound Resistor
  - Special **resistance wire** is wrapped around an insulating core, typically porcelain, cement, or pressed paper.
  - These resistors are typically used for high-current applications with low resistance and appreciable power.



Fig. 2-3: Large wire-wound resistors with 50-W power ratings. (a) Fixed  $R$ , length of 5 in. (b) Variable  $R$ , diameter of 3 in.

Copyright © The McGraw-Hill Companies, Inc. Permission required for reproduction or display.

## Types of Resistors

- Carbon Composition Resistors
  - Made of carbon or graphite mixed with a powdered insulating material.
  - Metal caps with tinned copper wire (called **axial leads**) are joined to the ends of the carbon resistance element. They are used for soldering the connections into a circuit.
  - Becoming obsolete because of the development of carbon-film resistors.



Fig. 2-2: Carbon resistors with the same physical size but different resistance values. The physical size indicates a power rating of  $\frac{1}{2}$  W.

Copyright © The McGraw-Hill Companies, Inc. Permission required for reproduction or display.

## Types of Resistors

### Carbon Film Resistors

- Compared to carbon composition resistors, carbon-film resistors have tighter tolerances, are less sensitive to temperature changes and aging, and generate less noise.

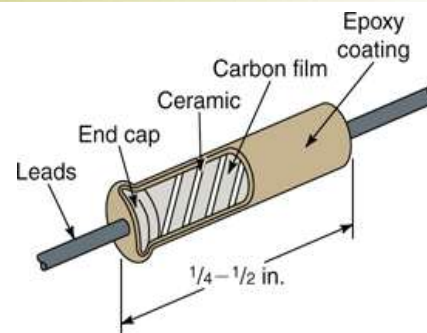


Fig. 2-4: Construction of a carbon film resistor.

Copyright © The McGraw-Hill Companies, Inc. Permission required for reproduction or display.

## 2-1: Types of Resistors

- **Metal Film Resistors**
  - Metal film resistors have very tight tolerances, are less sensitive to temperature changes and aging, and generate less noise.

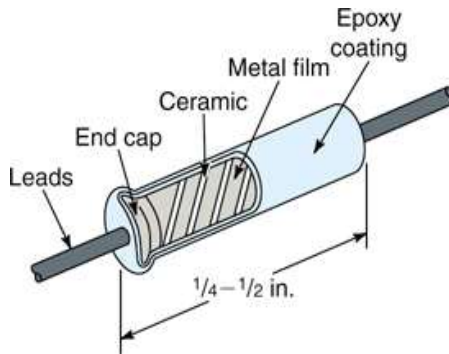


Fig. 2-5: Construction of a metal film resistor.

Copyright © The McGraw-Hill Companies, Inc. Permission required for reproduction or display.

## Types of Resistors

- **Surface-Mount Resistors (also called chip resistors)**
  - These resistors are:
    - Temperature-stable and rugged
    - Their end electrodes are soldered directly to a circuit board.
    - Much smaller than conventional resistors with axial leads.
    - Power dissipation rating is usually 1/8 to 1/4 W



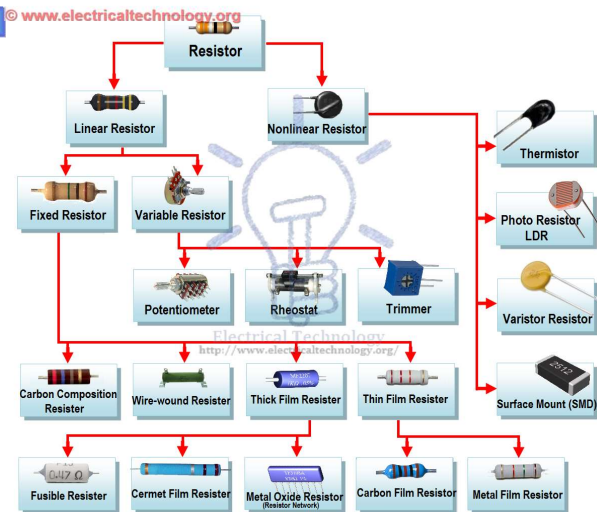
Fig. 2-6: Typical chip resistors.

Copyright © The McGraw-Hill Companies, Inc. Permission required for reproduction or display.

## Types of Resistors

- Fusible Resistors:
  - Fusible resistors are wire-wound resistors made to burn open easily when the power rating is exceeded. They serve a dual function as both a fuse and a resistor.

## Types of Resistors



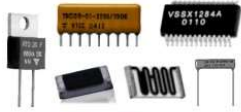
# Types of Resistors

## Examples of Resistor Package, Lead, and Mounting Styles

### Carbon & Metal Film



### Thick Film



### Thin Film



### Wire-Wound



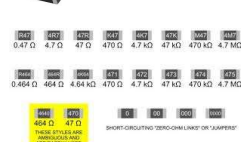
### Special-Purpose



### Adjustable



### SMD Resistor



Compilation by  
www.RFCafe.com

Examples provided by Radio Shack (radioshack.com) and Vishay (vishay.com) websites

# Types of Resistors

## SMD Resistor

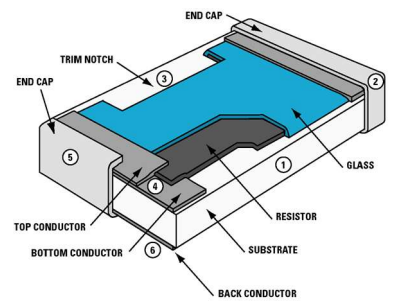
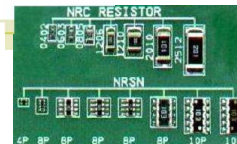
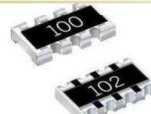
047	482	476	487	4K7	476	447	4M7
0.47 $\Omega$	4.7 $\Omega$	47 $\Omega$	470 $\Omega$	4.7 k $\Omega$	47 k $\Omega$	470 k $\Omega$	4.7 M $\Omega$

464	464	464	471	472	473	474	475
0.464 $\Omega$	464 $\Omega$	4.64 k $\Omega$	470 $\Omega$	4.7 k $\Omega$	47 k $\Omega$	470 k $\Omega$	4.7 M $\Omega$

4440 470  
464  $\Omega$  47  $\Omega$   
THESE STYLES ARE  
AMBIGUOUS AND  
ARE RARELY USED

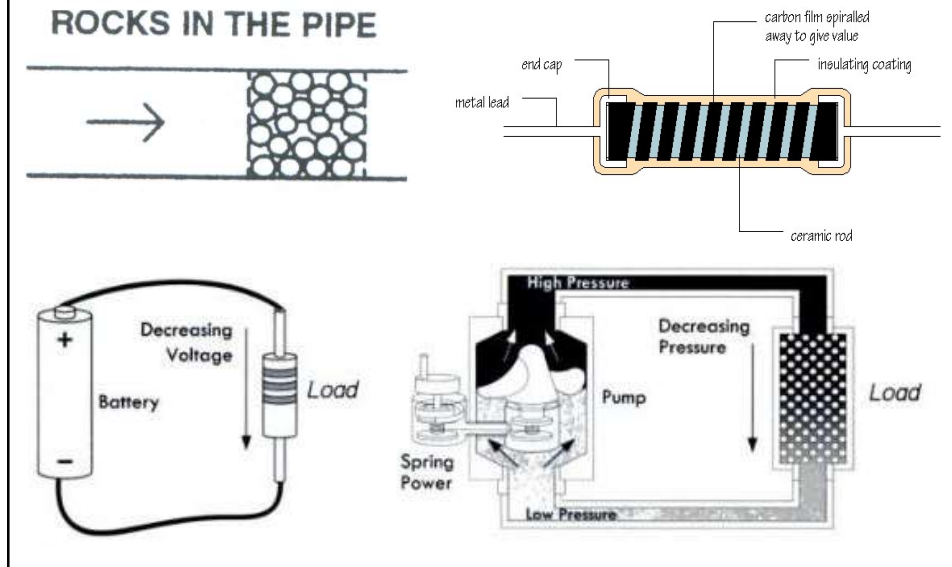
0 0 00 0000  
SHORT-CIRCUITING "ZERO-CHN LINKS" OR "JUMPERS"



ANATOMY OF A HIGH RELIABILITY THICK FILM CHIP RESISTOR



## Resistors-Water Analogy



## Resistor V-I Characteristic

- In a typical resistor, a conducting element displays linear voltage-current relationship. (i.e., current through a resistor is directly proportional to the voltage across it).

$$I \propto V$$

- Using  $G$  as a constant of proportionality, we obtain:

$$I = GV$$

- Equivalently,

$$V = RI \text{ (or } V = IR)$$

where  $R = 1/G$ .

–  $R$  is termed as the resistance of conductor (ohm,  $\Omega$ )

–  $G$  is termed as the conductance of conductor (mho,  $\mathfrak{S}$ )



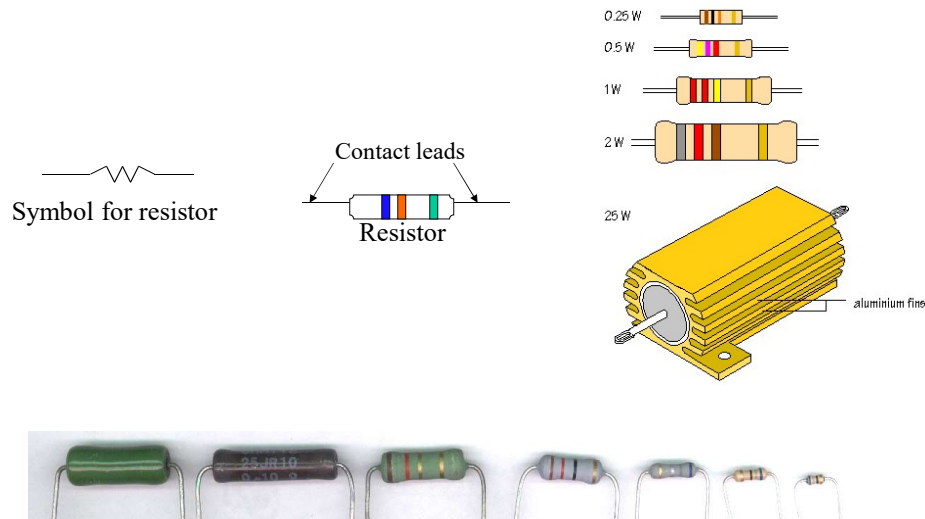
## **Resistor Applications**

- Resistors are used for:
  - Limiting current in electric circuits.
  - Lowering voltage levels in electric circuits (using voltage divider).
  - As current provider.
  - As a sensor (e.g., photoresistor detects light condition, thermistor detects temperature condition, strain gauge detects load condition, etc.)
  - In electronic circuits, resistors are used as pull-up and pull-down elements to avoid floating signal levels.

## **Resistors: Power Rating and Composition**

- It is very important to be aware of power rating of resistor used in circuits and to make sure that this limit is not violated. A higher power rating resistor can dissipate more energy than a lower power rating resistor.
- Resistors can be made of:
  - Carbon film (decomposition of carbon film on a ceramic core).
  - Carbon composition (carbon powder and glue-like binder).
  - Metal oxide (ceramic core coated with metal oxide).
  - Precision metal film.
  - High power wire wound.

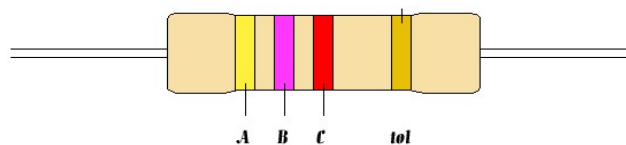
## Resistor Examples



## Resistor Labels

- Wire-wound resistors have a label indicating resistance and power ratings.
- A majority of resistors have color bars to indicate their resistance magnitude.
- There are usually 4 to 6 bands of color on a resistor. As shown in the figure below, the right most color bar indicates the resistor reliability, however, some resistor use this bar to indicate the tolerance. The color bar immediately left to the tolerance bar (C), indicates the multipliers (in tens). To the left of the multiplier bar are the digits, starting from the last digit to the first digit.

$$\text{Resistor value} = AB \times 10^C \pm \text{tol} \% (\Omega)$$

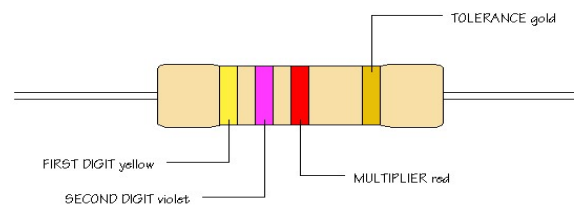


## Resistor Color Codes

Color	Tolerance
Brown	$\pm 1\%$
Red	$\pm 2\%$
Gold	$\pm 5\%$
Silver	$\pm 10\%$
None	$\pm 20\%$

Band color	Digit	Multiplier
Black	0	X1
Brown	1	X10
Red	2	X100
Orange	3	X1000
Yellow	4	X10000
Green	5	X100000
Blue	6	X1000000
Purple	7	X10000000
Grey	8	X100000000
White	9	X1000000000
Silver	-	x.01
Gold	-	x.1

## Example



- The first band is yellow, so the first digit is 4
- The second band is violet, so the second digit is 7
- The third band is red, so the multiplier is  $10^2$
- Resistor value is  $47 \times 10^2 \pm 5\%(\Omega)$

## 2-2: Resistor Color Coding

### ▪ Zero-Ohm Resistor

- Has zero ohms of resistance.
- Used for connecting two points on a printed-circuit board.
- Body has a single black band around it.
- Wattage ratings are typically 1/8- or 1/4-watt.

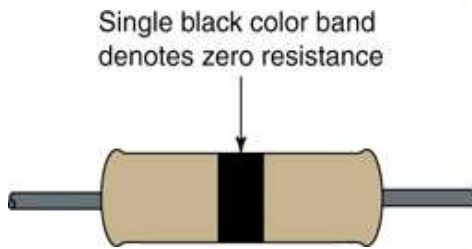


Fig. 2-11: A zero-ohm resistor is indicated by a single black color band around the body of the resistor.

Copyright © The McGraw-Hill Companies, Inc. Permission required for reproduction or display.

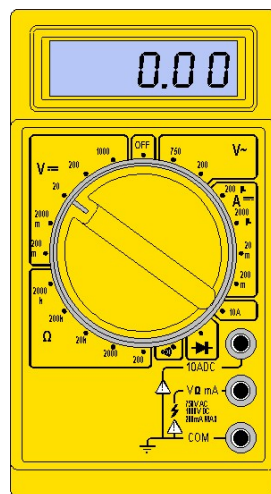
## Chip Resistor Coding System

- Body color is usually white or off-white
- End terminals are C-shaped
- Three (four) digits on the body or on the film
- First 2 (3) digits indicate the first two (three) numbers
- Third (fourth) digit indicates the multiplier
- Are available in tolerances of  $\pm 1\%$   $\pm 5\%$  but tolerances are not indicated on the chip
- The letter R is used to signify a decimal point for values between 1 to 10 ohms (1R5 means 1.5 ohms)

## Metric Units and Conversions

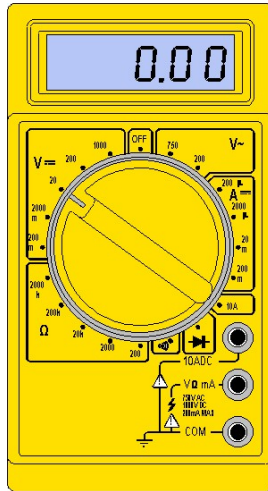
Abbreviation	Means	Multiply unit by	Or
p	pico	.000000000001	$10^{-12}$
n	nano	.000000001	$10^{-9}$
$\mu$	micro	.000001	$10^{-6}$
m	milli	.001	$10^{-3}$
.	Unit	1	$10^0$
k	kilo	1,000	$10^3$
M	mega	1,000,000	$10^6$
G	giga	1,000,000,000	$10^9$

## Digital Multimeter 1



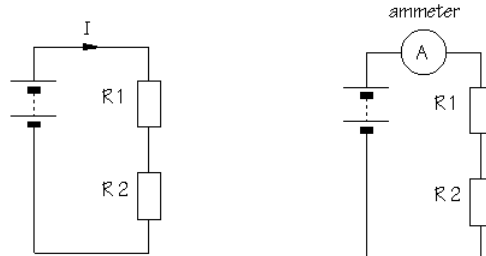
- DMM is a measuring instrument
- An **ammeter** measures current
- A **voltmeter** measures the potential difference (voltage) between two points
- An **ohmmeter** measures resistance
- A **multimeter** combines these functions, and possibly some additional ones as well, into a single instrument

## Digital Multimeter 2



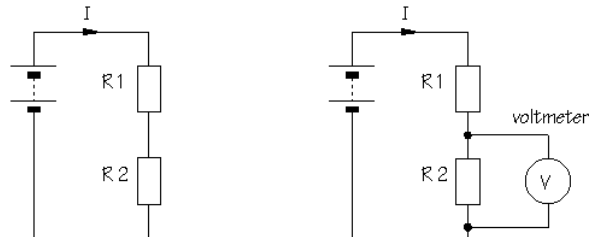
- Voltmeter
  - Parallel connection
- Ammeter
  - Series connection
- Ohmmeter
  - Without any power supplied
- Adjust range (start from highest limit if you don't know)

## Ammeter Connection



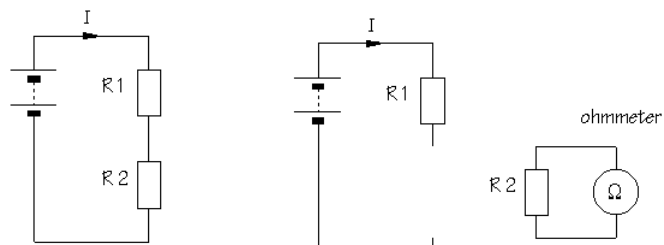
- Break the circuit so that the ammeter can be connected in series
- All the current flowing in the circuit must pass through the ammeter
- An ammeter must have a very **LOW** input impedance

## Voltmeter Connection



- The voltmeter is connected in parallel between two points of circuit
- A voltmeter should have a very **HIGH** input impedance

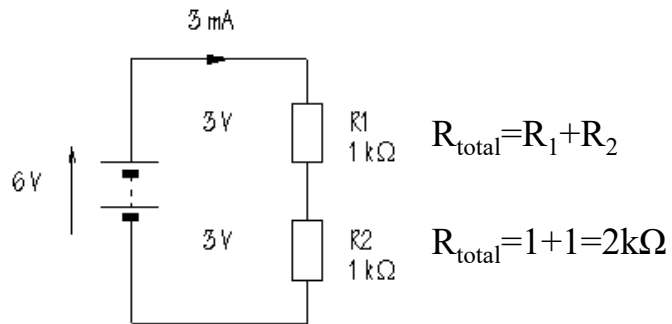
## Ohmmeter Connection



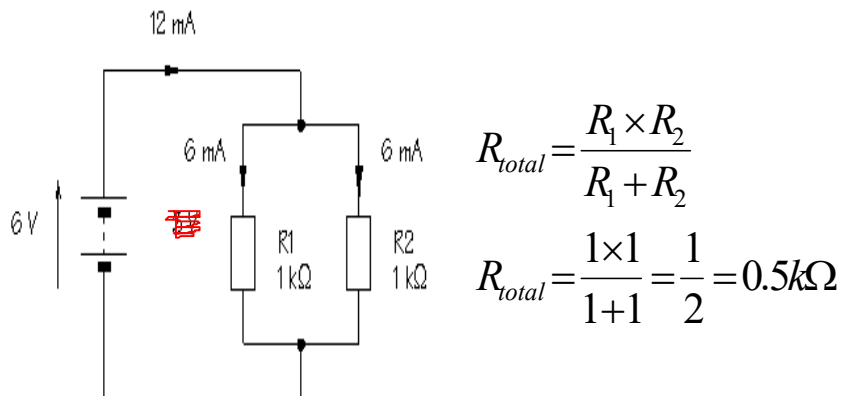
- An ohmmeter does not function with a circuit connected to a power supply
- Must take it out of the circuit altogether and test it separately



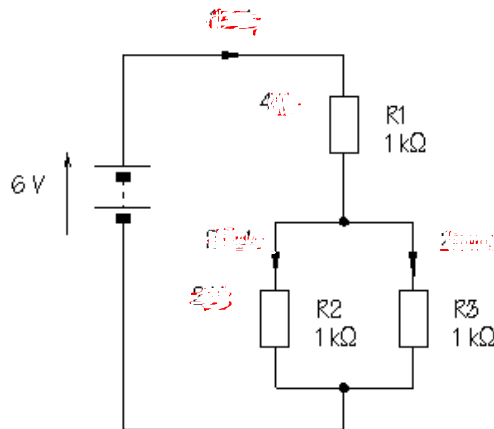
## Resistors in Series



## Resistors in Parallel



## Exercise 1

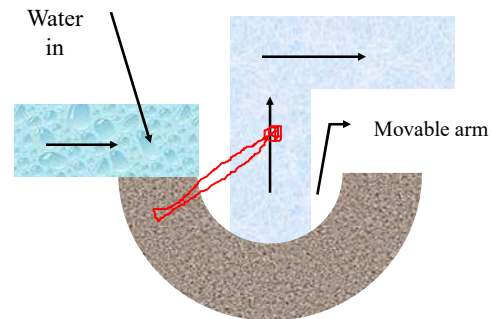


$$R_{total} = R_1 + \frac{R_2 \times R_3}{R_2 + R_3}$$

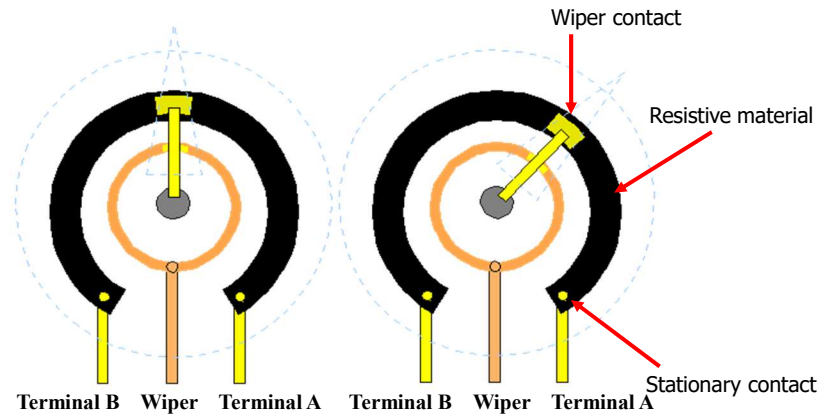
$$R_{total} = 1 + \frac{1 \times 1}{1 + 1} = \frac{3}{2} = 1.5k\Omega$$

## Variable Resistor Concept

- In electrical circuit, a switch is used to turn the electricity on and off just like a valve is used to turn the water on and off.
- There are times when you want some water but don't need all the water that the pipe can deliver, so you control water flow by adjusting the faucet.
- Unfortunately, you can't adjust the thickness of an already thin wire.
- Notice, however, that you can control the water flow by forcing the water through an adjustable length of rocks, as shown to the right.



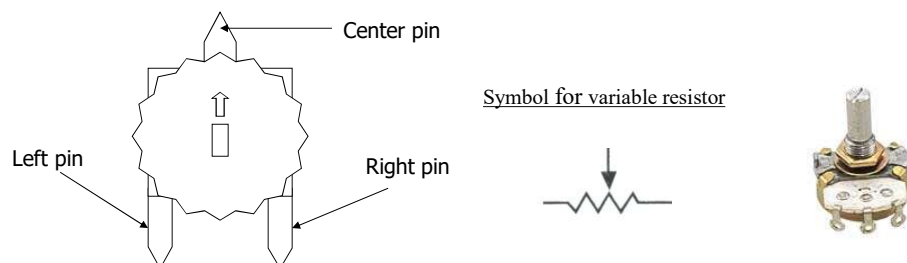
## Variable Resistor Construction



- To vary the resistance in an electrical circuit, we use a variable resistor.
- This is a normal resistor with an additional arm contact that can move along the resistive material and tap off the desired resistance.

## Variable Resistor Operation

- The dial on the variable resistor moves the arm contact and sets the resistance between the left and center pins. The remaining resistance of the part is between the center and right pins.
- For example, when the dial is turned fully to the left, there is minimal resistance between the left and center pins (usually  $0\Omega$ ) and maximum resistance between the center and right pins. The resistance between the left and right pins will always be the total resistance.

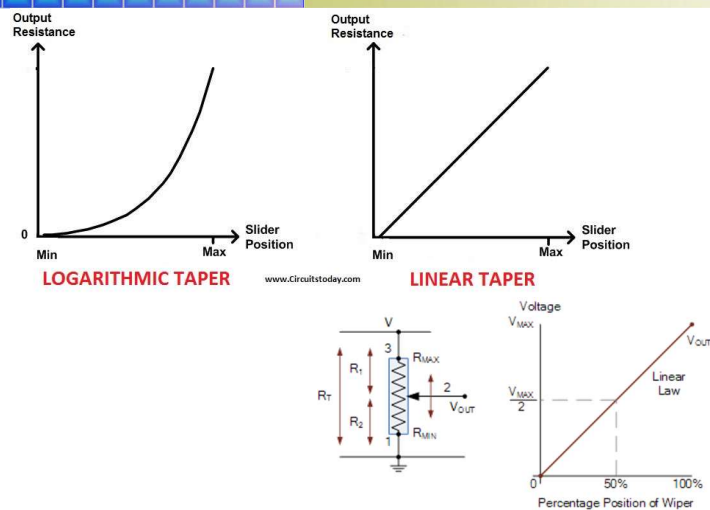


## Variable resistors

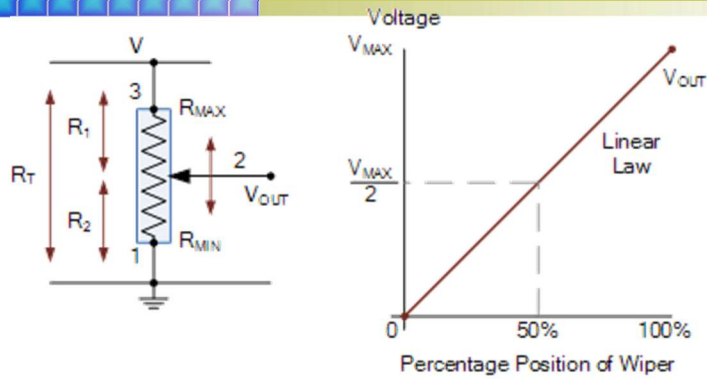
- Decade resistance box
  - Provides any  $R$  within a wide range of values
  - First dial is the units or  $R \times 1$  dial.
  - Second dial is the tens or  $R \times 10$  dial
  - The hundreds or  $R \times 100$  dial has an  $R$  of 0 to  $900\Omega$
  - Etc.
  - Dials are connected internally so that their values add to one another.



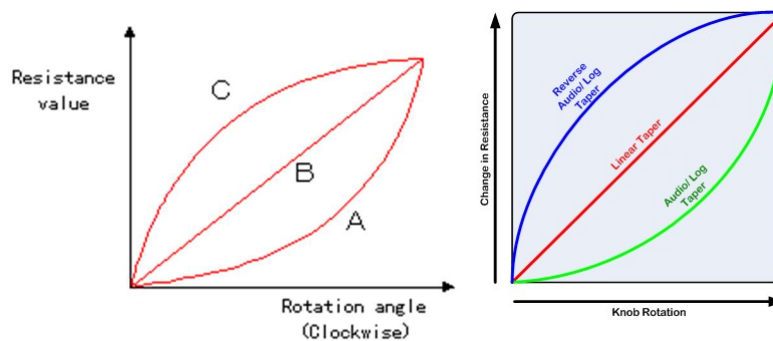
## Variable resistors Characteristics



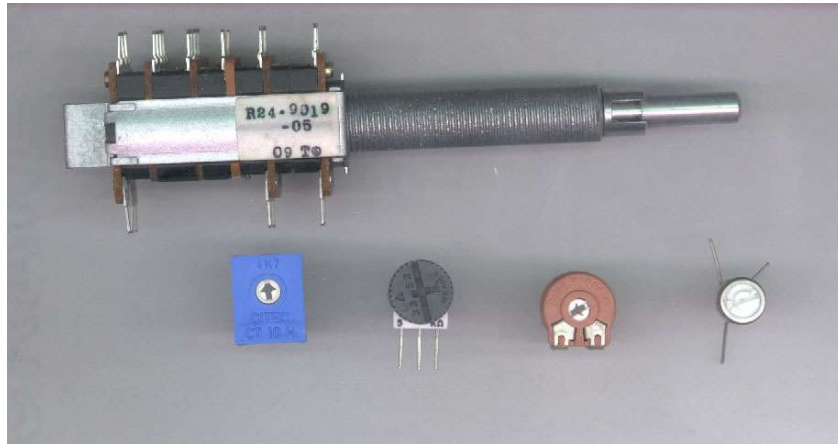
## Variable resistors Characteristics



## Variable resistors Characteristics



## Variable Resistor: Rotary Potentiometers



## Variable Resistor: Other Examples



Photoresistor



Thermistor

## Resistance Formula

- For a resistor made using a homogenous material

$$R = \frac{\rho L}{A}$$

where

$\rho$  = specific resistance of material (material property)

L = length of conductor used to make the resistor

A = cross-section area of conductor used to make the resistor

## Capacitor Concept

- A capacitor is an energy storage element which is analogous to the spring element of mechanical systems.

- It can store electrical pressure (voltage) for periods of time.

-When a capacitor has a difference in voltage (electrical pressure) across its plate, it is said to be charged.

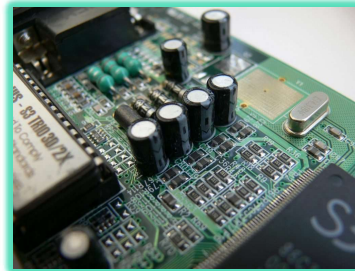
-A capacitor is charged by having a one-way current flow through it for a period of time.

-It can be discharged by letting a current flow in the opposite direction out of the capacitor.



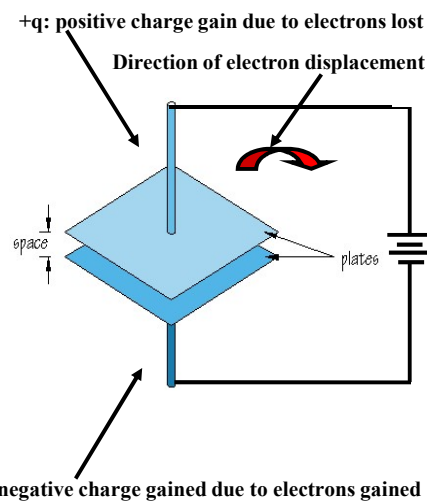
## Capacitor Concept

In layman's terms, a capacitor is a tiny electrical component soldered to the motherboard. Capacitors perform a couple of different functions. First, a capacitor conditions DC voltage to other components (e.g. the video card, hard drive, sound card etc.) as a way to provide a steady stream of power. Finally, a capacitor can also hold or store an electric charge to be discharged at a later time, such as in the case of a camera flash.



## Capacitor Construction

- A capacitor is constructed using a pair of parallel conducting plates separated by an insulating material (dielectric).
- When the two plates of a capacitor are connected to a voltage source as shown, charges are displaced from one side of the capacitor to the other side, thereby establishing an electric field.
- The charges continue to be displaced in this manner until the potential difference across the two plates is equal to the potential of voltage source.

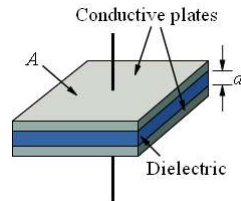


## Circuit Parameters

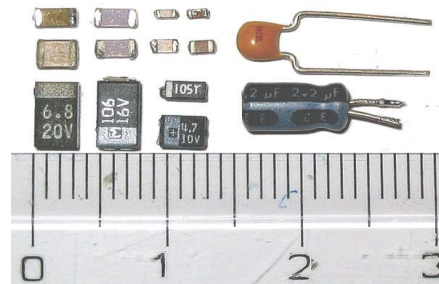
### Capacitors

$$C = \text{Charge/Voltage} = Q/V$$

Units: Farad

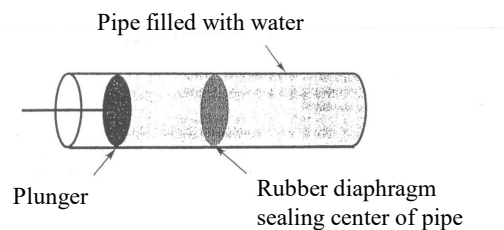


Smooths changes  
in voltage



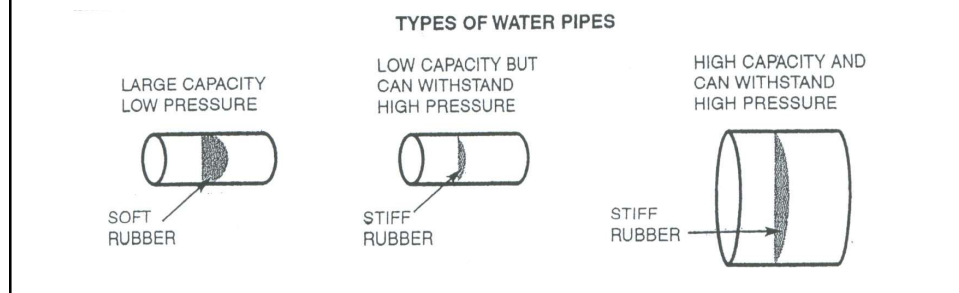
### Capacitor Water Pipe Analogy —I

- In the water pipe analogy, a capacitor is thought of as a water pipe:
  - with a rubber diaphragm sealing off each side of the pipe and
  - a plunger on one end.
- When the plunger pushes toward the diaphragm, the water in the pipe forces the diaphragm to stretch until the force of the diaphragm pushing back on the water equals the force on the plunger → pipe is charged!
- If the plunger is released, the diaphragm will push the plunger back to its original position → pipe is discharged.



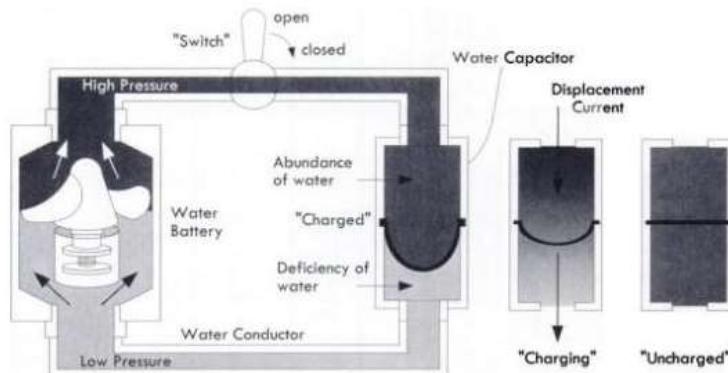
## Capacitor Water Pipe Analogy —II

- If the rubber diaphragm is made very soft, it will stretch out and hold a lot of water but will break easily (large capacitance but low working voltage).
- If the rubber diaphragm is made very stiff, it will not stretch far but withstand higher pressure (low capacitance but high working voltage).
- By making the pipe larger and keeping the rubber stiff, we can achieve a device that holds a lot of water and withstand high pressure.
- So the pipe size is determined from the amount of water to be held and the amount of pressure to be handled.



## Capacitor Water Pipe Analogy —III

- Water capacitor: a tube with a rubber membrane in the middle
- Rubber membrane analogous to the dielectric, two chambers analogous to two capacitor plates
- When no water pressure is applied on the water capacitor, the two chambers contain same amount of water (uncharged)
- When pressure is applied on the top chamber, the membrane is pushed down causing the water to be displaced from the bottom chamber (appearance of current flow → displacement current)



## Capacitor V-I Characteristic

- The charge accumulated on capacitor plates is directly proportional to voltage applied across the plates.

$$q \propto V \longrightarrow q = CV$$

where C is the constant of proportionality and is called capacitance (unit: Farad).

- V-I characteristic of a capacitor is obtained by computing

$$\frac{d}{dt}[q = CV] \longrightarrow \frac{dq}{dt} = C \frac{dv}{dt} \longrightarrow I(t) = C \frac{dv}{dt}$$

- Alternatively, integrating the above equation w.r.t. time, and rearranging terms, we get

$$V(t) = \frac{1}{C} \int_0^t I(\tau) d\tau$$

## Capacitance Formula

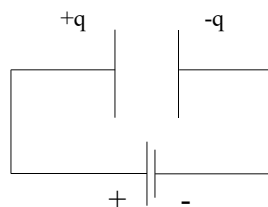
- For a parallel capacitor:

$$C = \frac{\epsilon_0 A}{D}$$

- $\epsilon_0$  = permittivity of free space
- A = plate area
- d = separation distance of plate.

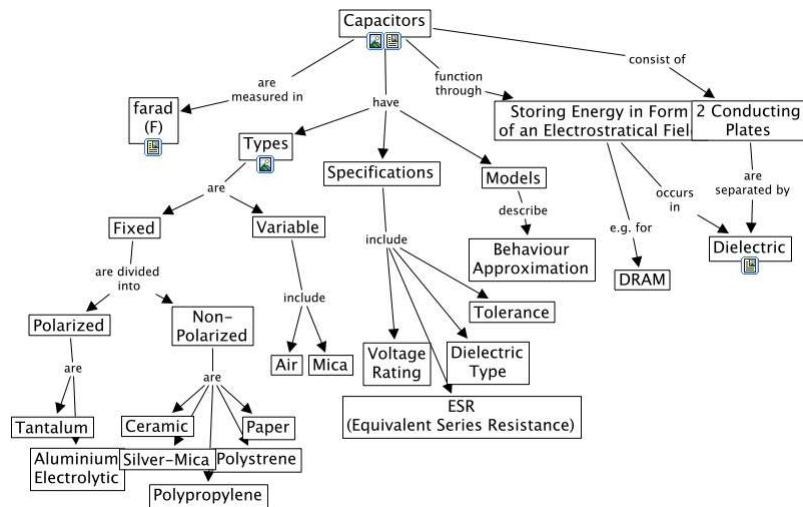
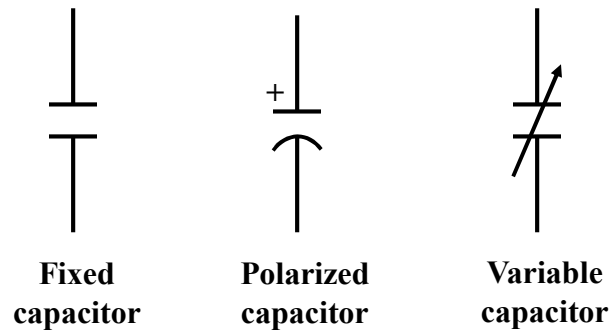
- Often, we use  $G = A/d$  as geometry factor (for other types of capacitors as well).

- If a dielectric material with dielectric constant K separates the two plates of the capacitor, then  $C = K\epsilon_0 G$ , where K = dielectric constant. Usually  $K > 1$ .



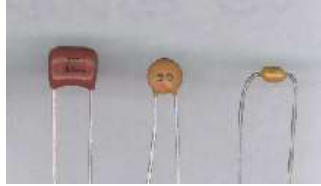
Voltage source

## Capacitor Symbols



Capacitors info :

## Capacitor Variations



### •Ceramic capacitors

- very popular nonpolarized capacitor
- small, inexpensive, but poor temperature stability and poor accuracy
- ceramic dielectric and a phenolic coating
- often used for bypass and coupling applications

### •Electrolytic

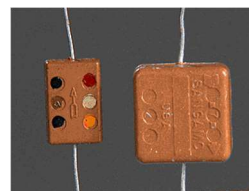
- Aluminum, tantalum electrolytic
- Tantalum electrolytic capacitor has a larger capacitance when compared to aluminum electrolytic capacitor
- Mostly polarized.
- Greater capacitance but poor tolerance when compared to nonelectrolytic capacitors.
- Bad temperature stability, high leakage, short lives

## Capacitor Variations



### •Mylar

- very popular, nonpolarized
- reliable, inexpensive, low leakage
- poor temperature stability

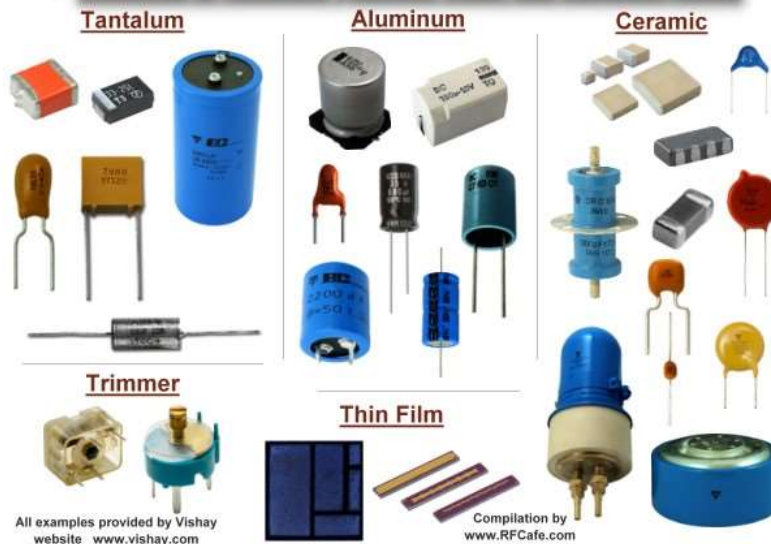


### •Mica

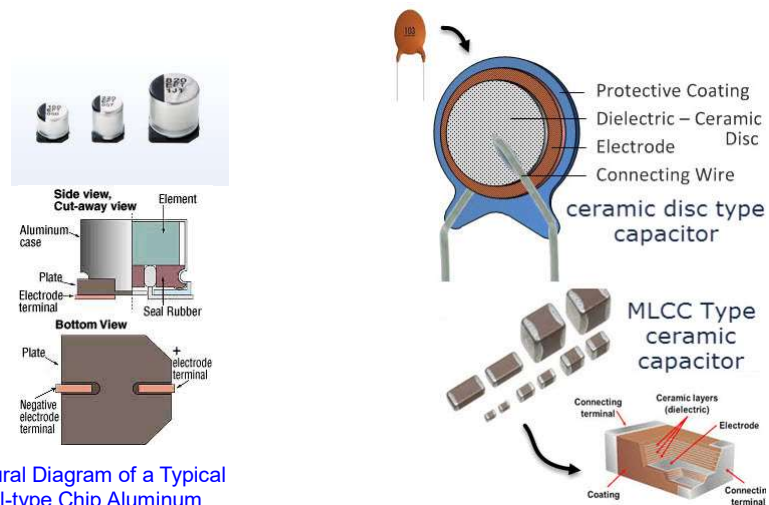
- extremely accurate, low leakage current
- constructed with alternate layers of metal foil and mica insulation, stacked and encapsulated
- small capacitance
- often used in high-frequency circuits (i.e. RF circuits)

## Capacitor Variations

### Examples of Capacitor Package, Lead, and Mounting Styles



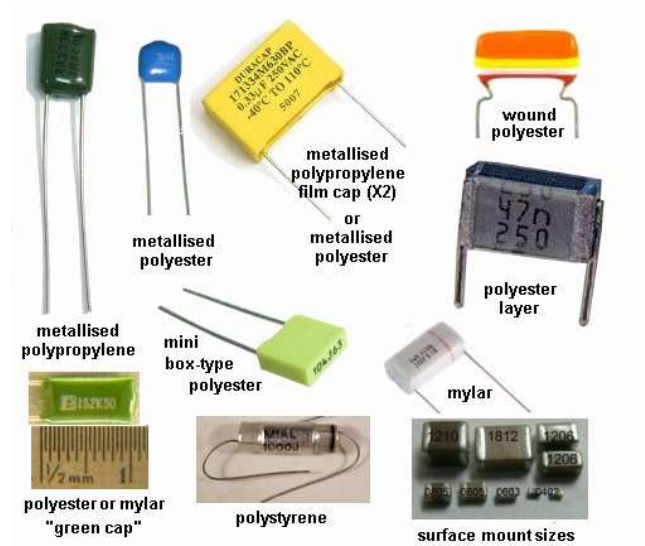
## Types of Capacitor



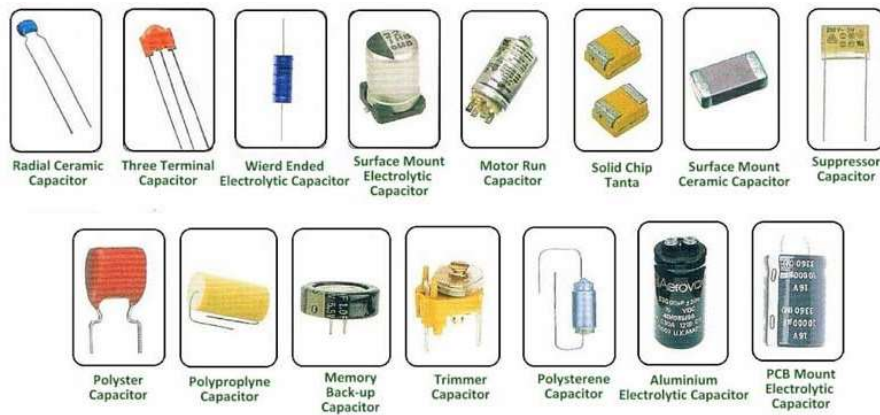
Structural Diagram of a Typical Vertical-type Chip Aluminum Electrolytic Capacitor (2-terminal type)



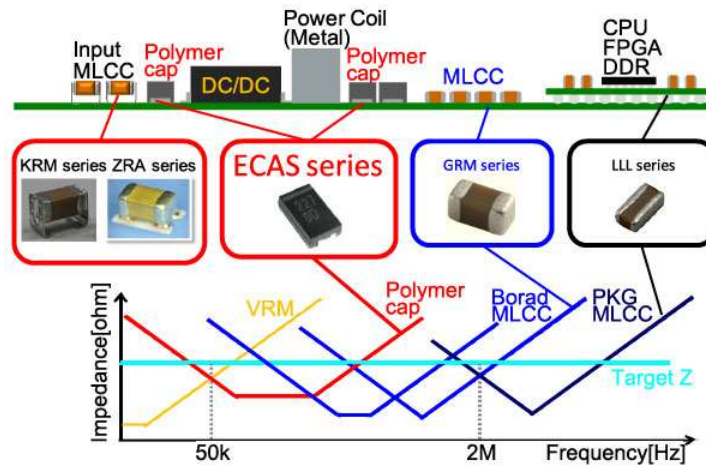
## Types of Capacitor



## Types of Capacitor

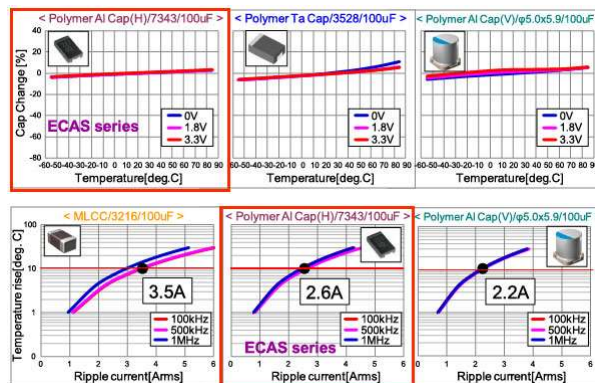


## Types of Capacitor

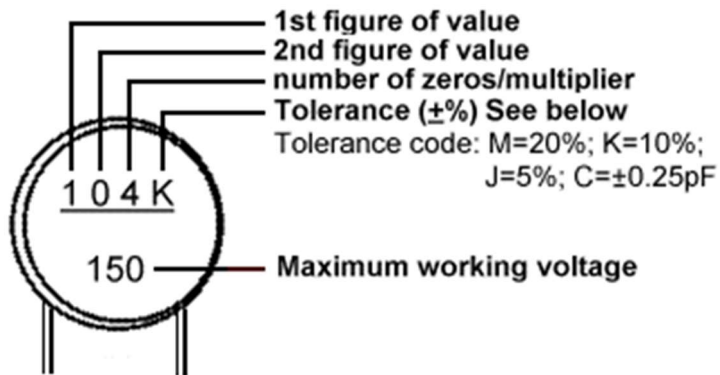


## Comparison of Capacitor Characteristics

Type		Capacitance range	Voltage range	Size	Frequency characteristics	Low heat generation	Temperature characteristics	DC voltage characteristics	Withstand voltage	Service life/reliability
Aluminum	Electrolytic (can)	○	○	×	×	×	×	○	△	×
	Polymer (can)	○	○	×	○	○	○	○	△	○
	Polymer (monolithic)	△	△	△	○	○	○	○	△	○
Tantalum	MnO <sub>2</sub>	○	○	○	×	×	○	○	△	×
	Polymer	○	○	○	○	○	○	○	△	○
Ceramic	High-dielectric constant	○	○	○	○	○	△	×	○	○



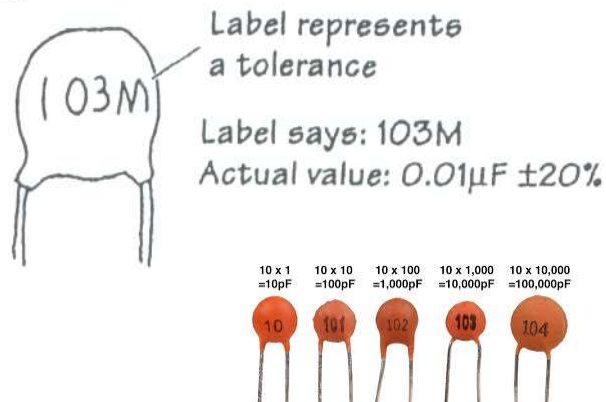
### Capacitor Reading Example —I















- Thus, we have a  $0.1\mu\text{F}$  capacitor with  $\pm 10\%$  tolerance.

### Capacitor Reading Example —II

Ceramic



## Capacitor Reading Value

Color	Significant digits	Multiplier	Capacitance tolerance	DC working voltage
 Black	0	1	$\pm 20\%$	—
 Brown	1	10	$\pm 1\%$	100
 Red	2	100	$\pm 2\%$	—
 Orange	3	1 000	—	300
 Yellow	4	10 000	—	—
 Green	5	100 000	$\pm 0.5\%$	500
 Blue	6	1 000 000	—	—
 Violet	7	10 000 000	—	—
 Grey	8	—	—	—
 White	9	—	—	—
 Gold	—	—	$\pm 5\%^*$	1000
 Silver	—	—	$\pm 10\%$	—

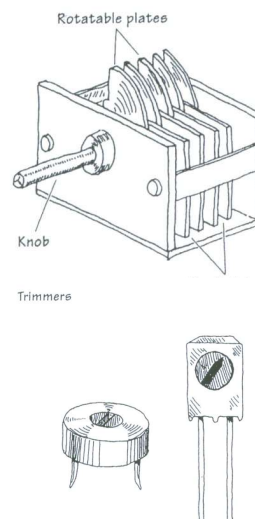
## Variable Capacitors

•Devices that can be made to change capacitance values with the twist of a knob.

•Air-variable or trimmer forms

—Air-variable capacitor consists of two sets of aluminum plates (stator and rotor) that mesh together but do not touch. Often used in frequently adjusted tuning applications (i.e., tuning communication receivers over a wide band of frequencies).

—A trimmer capacitor is a smaller unit that is designed for infrequent fine-tuning adjustment (i.e., fine-tuning fixed-frequency communications receivers, crystal frequency adjustments, adjusting filter characteristics)



## Inductors

• Inductor is a passive energy storage element that stores energy in the form of magnetic field.

• Inductor characteristic is governed by Faraday's law:

$$V(t) = \frac{d\lambda}{dt}$$

–  $V$  = voltage induced across an inductor

–  $\lambda$  = magnetic flux (unit: Webers, Wb) through the coil windings (a coil made using resistance-less wires) due to current flowing through inductor.

• For an ideal coil, magnetic flux is proportional to current, so

$$\lambda \propto I \text{ or } \lambda = LI$$

–  $L$  is constant of proportionality, called inductance (unit: Henry, Wb/Amp).

• So, now, the V-I characteristic of an inductor is:

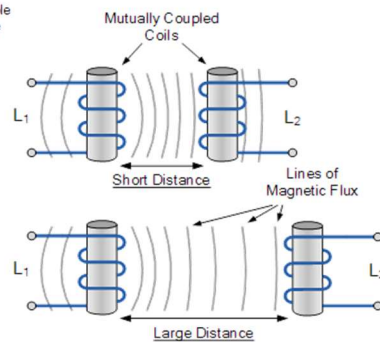
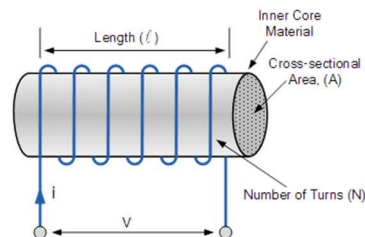
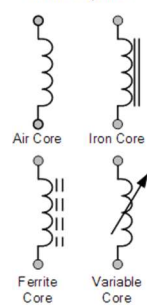
$$V(t) = \frac{d}{dt}(\lambda) = \frac{d}{dt}(LI) = L \frac{dI}{dt}$$

$$I(t) = \frac{1}{L} \int_0^t V(\tau) d\tau$$

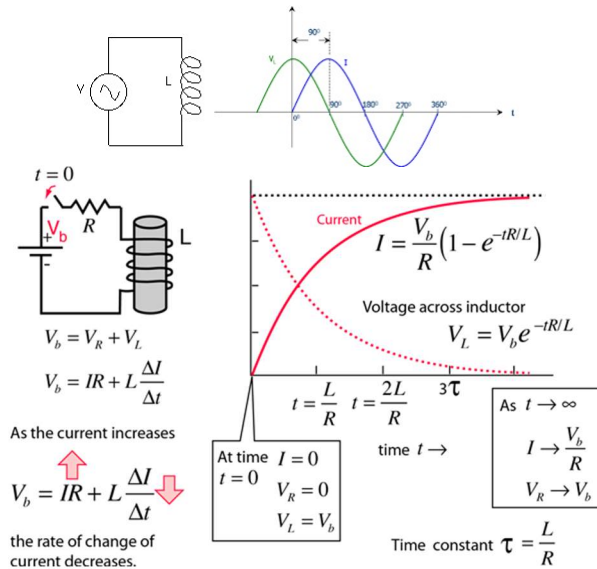
• The above V-I characteristics demonstrate that the current through an inductor can not be altered instantaneously.

## Inductors

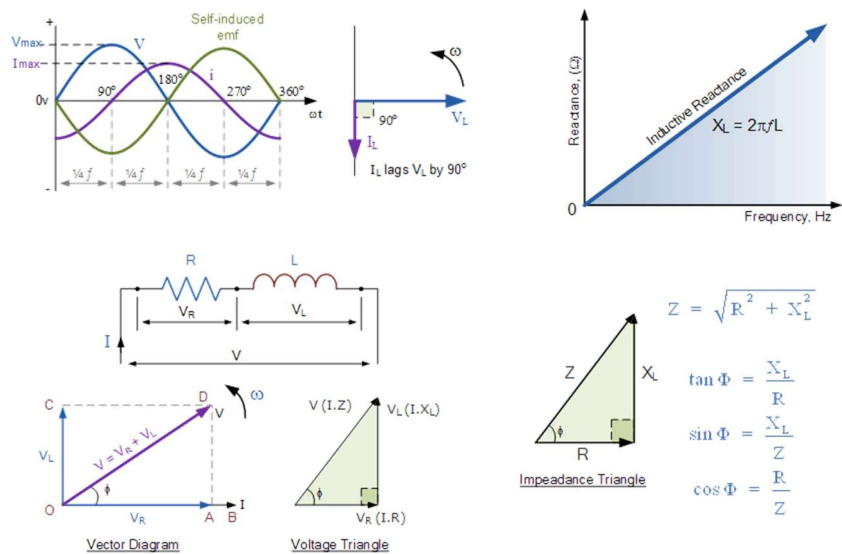
Inductor Symbols



## Inductors

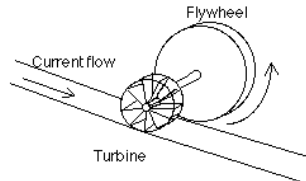


## Inductors



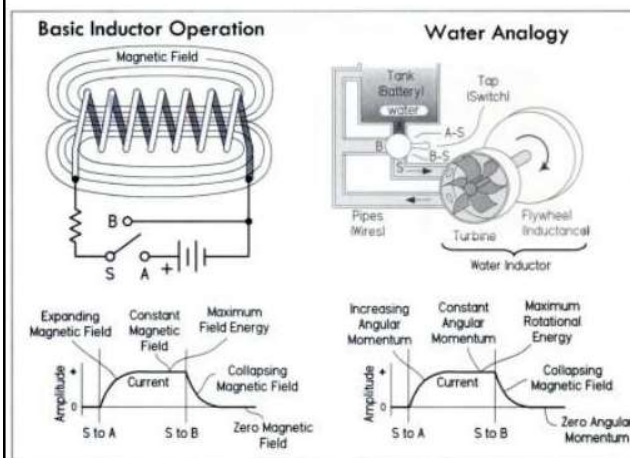
<https://www.electronics-tutorials.ws/inductor/ac-inductors.html>

## Inductor-Water Analogy —I



- Suppose a turbine is hooked up to the flywheel and water is supplied to the turbine. The flywheel will start to move slowly. Eventually, the flywheel will move at the same rate as the current.
- If the current alternates back and forth, the flywheel/turbine will take some time to build up to the initial direction that the water wants to flow.
- As the current moves back and forth, the flywheel creates the extra “resistance” to the change in current flow, but eventually the flywheel/turbine will move in the same direction as the current flow.

## Inductor-Water Analogy —II



**Mechanical inertia and inductor both resist sudden change in their state**

- When switch S contacts A, the field generated by the applied positive voltage creates a reverse induced voltage that initially resists current flow
- Based on the value of inductance, as the magnetic field reaches steady-state, the reverse voltage decays
- A collapsing field is generated when applied voltage is removed (switch S contacts B), creating a forward induced voltage that attempts to keep current flowing
- Based on the value of inductance, as the magnetic field reaches zero steady-state, the forward voltage decays

## Inductance of a Cylindrical Coil

$$L = \frac{\mu_0 N^2 \pi r^2}{\ell}$$

- $\mu_0$  = permeability of free space
- $N$  = number of turns in coil
- $\ell$  = length of resistance-less wire used in coil
- $r$  = radius of coil cross section.

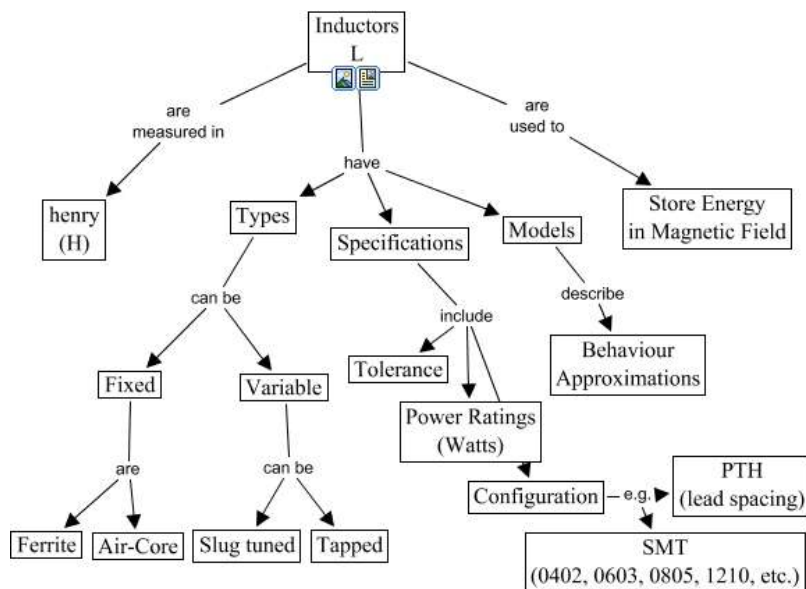
• If number of turns per unit length is “ $n$ ”, then  $N = n\ell$ , so:

$$L = \frac{\mu_0 (n^2 \ell^2) \pi r^2}{\ell} = \mu_0 n^2 \ell \pi r^2 = \mu_0 n^2 \ell A$$

–  $A$  = cross-sectional area of coil.

– If a magnetizable material forms the core of coil, then permeability  $\mu$  will be larger than  $\mu_0$ .

## Inductor Variations





## Inductor Variations —I



## Inductor Variations —II



### •Antenna coil

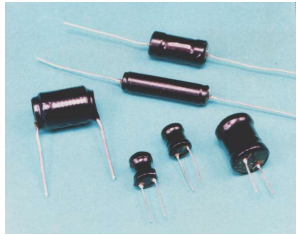
- contains an iron core that magnifies magnetic field effects
- used to tune in ultra-high-frequency signals, i.e. RF signals



### •Tuning coil

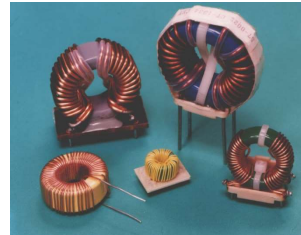
- screw-like “magnetic field blocker” that can be adjusted to select the desired inductance value
- used in radio receivers to select a desired frequency.

## Inductor Variations —III



### •Chokes

- general-purpose inductors that act to limit or suppress fluctuating current.
- some use a resistor-like color code to specify inductance values.



### •Toroidal coil

- resembles a donut with a wire wrapping
- high inductance per volume ratios, high quality factors, self-shielding, can be operated at extremely high frequencies

## Examples of Inductor Package, Lead, and Mounting Styles

### Wire-Wound



### NFC & Wireless Charging



Examples provided by Vishay website  
www.vishay.com

### Printed



Compilation by  
www.RFCafe.com

### Ceramic



### Tunable



Examples provided by Piconics website  
www.piconics.com



Examples provided by TDK / EPCOS website  
www.tdk.com

### Examples of Inductor Package, Lead, and Mounting Styles



### Transformer



#### •Isolation

–acts exclusively as an isolation device; does not increase or decrease the secondary voltage

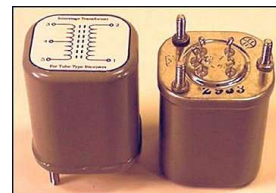
–usually come with an electrostatic shield between the primary and secondary. Often come with a three-wire plug and receptacle that can be plugged directly into a power outlet



#### •High Frequency

–often come with air or powdered-iron cores

–used for high frequency applications, i.e. matching RF transmission lines to other devices (transmission line to antenna)



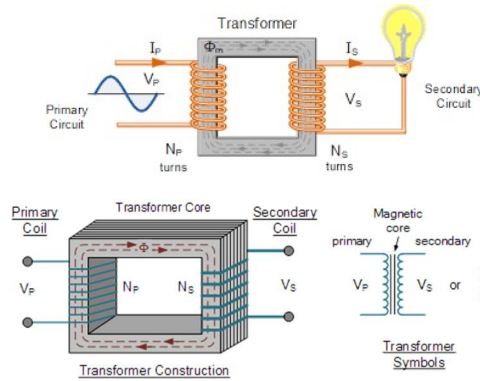
#### •Audio

–used primarily to match impedances between audio devices

–work best at audio frequencies from 150Hz to 12kHz

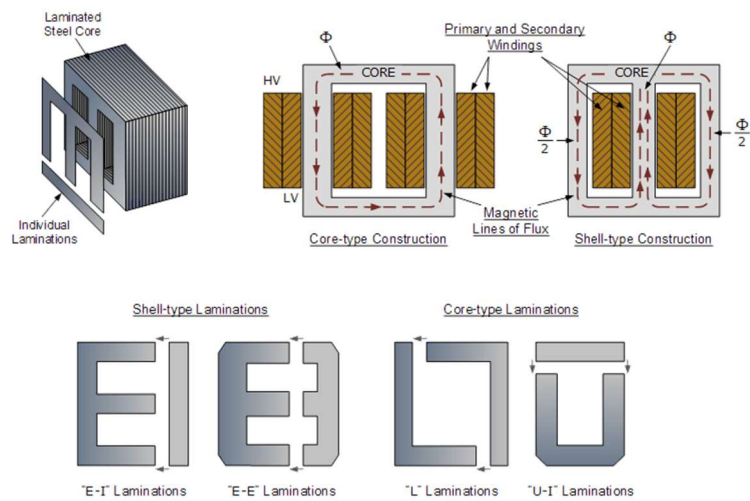
–come in a variety of shapes and sizes, typically contain a center tap

## Transformer

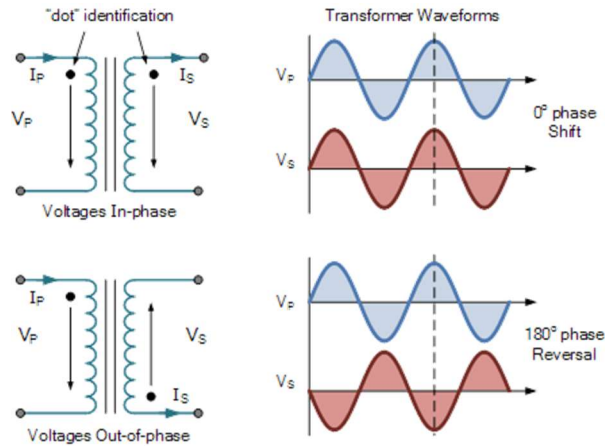


- $V_P$  – is the Primary Voltage
- $V_S$  – is the Secondary Voltage
- $N_P$  – is the Number of Primary Windings
- $N_S$  – is the Number of Secondary Windings
- $\Phi$  (phi) – is the Flux Linkage

## Transformer Construction

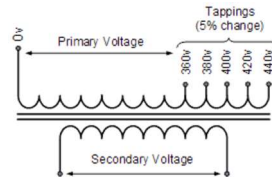


## Transformer Construction

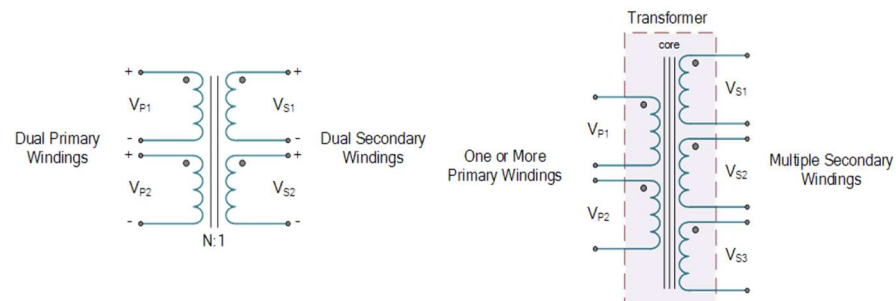


## Transformer Construction

### Transformer Primary Tap Changes

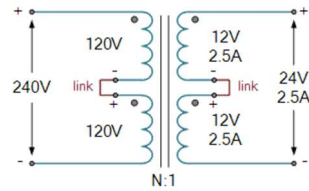


### Multiple Winding Transformer

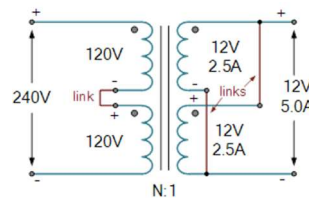


## Dual Voltage Transformer

### Series Connected Secondary Transformer



### Parallel Connected Secondary Transformer



## Center-tap Transformer

